

Technical data sheet pump forks / schlenklines

Area of application

For condensing water, solvents or gases in connection with a vacuum pump

- laboratory technology
- medicinal technology
- biotechnology
- vacuum technology

Characteristics

- reliable and easy handling
- glass material according to ISO 3585 (DURAN)
- Produran valve with o-ring valve
- easy disassembly and cleaning of the valves
- Interchangeable valve stamp
- individually configurable

Description of the glass for the pump fork / schlenkline

Material

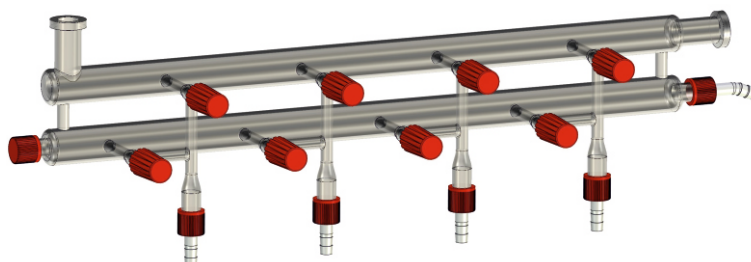
- borosilicate glass 3.3 ISO 3585

Chemical characteristics

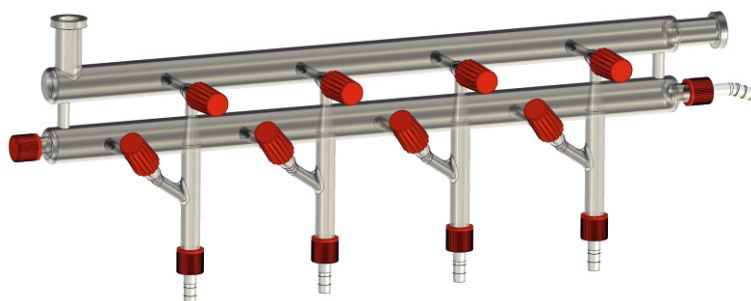
- hydrolytic resistance: according to ISO 719 (98°C)
- hydrolytic resistance: according to ISO 720 (121°C)
- acid resistance: according to ISO 1776
- alkaline resistance: according to ISO 695-A2

Physical characteristics

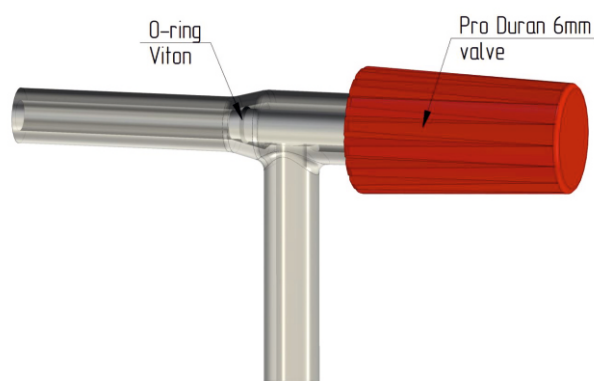
- linear expansion coefficient: $3,3 \times 10^{-6}$ 1/K
(in between 20-300°C)
- density: 2,23 g/cm³
- specific thermal capacity: 910 J/kg K
- transformation temperature: 525°C



Pump fork Type 17631



Pump fork Type 17631-HV



Valve structure:

Valve stamp made of PTFE with Viton O-ring seal

KGW - ISOTHERM

Karlsruher Glastechnisches Werk
76185 Karlsruhe Gablonzerstraße 6
Tel: 0721 95897-0 Fax: 0721 95897-77
E-Mail: info@KGW-ISOTHERM.COM
Internet: www.KGW-ISOTHERM.COM

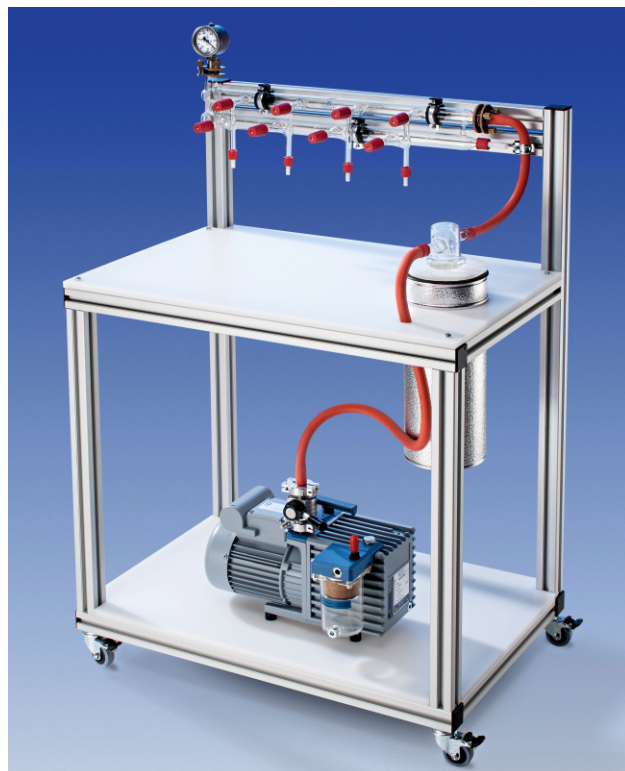
Technical data sheet pump forks / schlenklines

Vacuum connections for the pump fork

- glass threads with screw-on cap and PTFE-olive, e.g. GL18
- vacuum glass flanges, e.g. KF NW 16
- plane flanges, e.g. DN 25
- conical ground joints NS 29/32
- spherical ground joints S 29
- spherical ground joints Rotulex S 29 with O-ring seal

Safety advises and regulations

- always wear protective glasses and protective gloves
- national regulations for laboratories
- company-internal regulations
- safety regulations for handling with liquid gases
- Pressure calculation according to "AD Merkblätter"

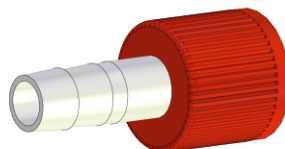


Example of a pumping device GP3 with pump fork 17631

Dimensions and ordering data

Type	Connection vacuum pump	Connections	side connections	Article. No.
Pump fork with ventilation	KF NW 16	4 x GL18 with olive	1x GL18 with Sealing cap / 1x GL18 with angled olive	17631
Pump fork HV with ventilation	KF NW 16	4 x GL18 with olive	1x GL18 with Sealing cap / 1x GL18 with angled olive	17631-HV
Pump fork with ventilation	KF NW 16	5 x GL18 with olive	1x GL18 with Sealing cap / 1x GL18 with angled olive	17633
Pump fork HV with ventilation	KF NW 16	5 x GL18 with olive	1x GL18 with Sealing cap / 1x GL18 with angled olive	17633-HV

Spare parts	Article No.
GL 18 olive	17331
Pertinax-screw connection KF 10/16	17315
Pertinax-screw connection KF 20/25	17316
Centering ring KF 10/16	17320
Centering ring KF 20/25	17321
Spare part drain valve	17701
Replacement o-ring Viton	17702



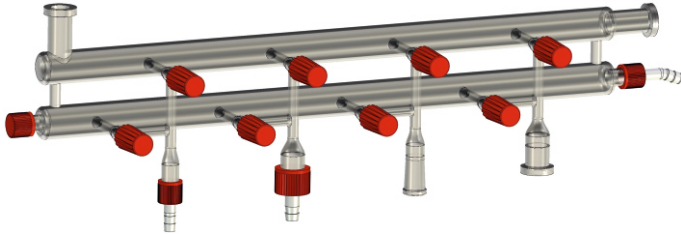
GL18 olive



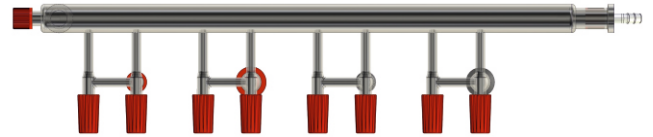
Spare part drain valve

Technical data sheet pump forks / schlenklines

Custom made products



Pump fork connections: 1 x GL18
 1 x GL25
 1 x NS14/23
 1 x Kleinflansch KF Nw16



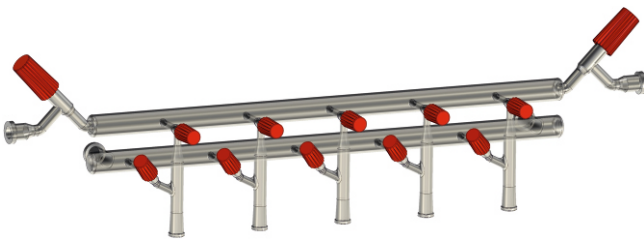
Valve design: Standard



Pump fork connections: 5 x KF NW16



Valve design: HV



Pump fork connections: 5 x KF NW16

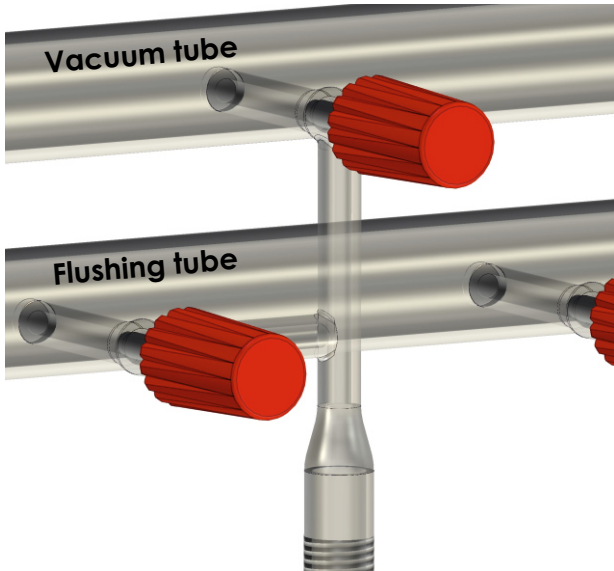
Special connections: 2 x Produran Ventil Ø10mm mit O-Ringdichtung und KF Nw16



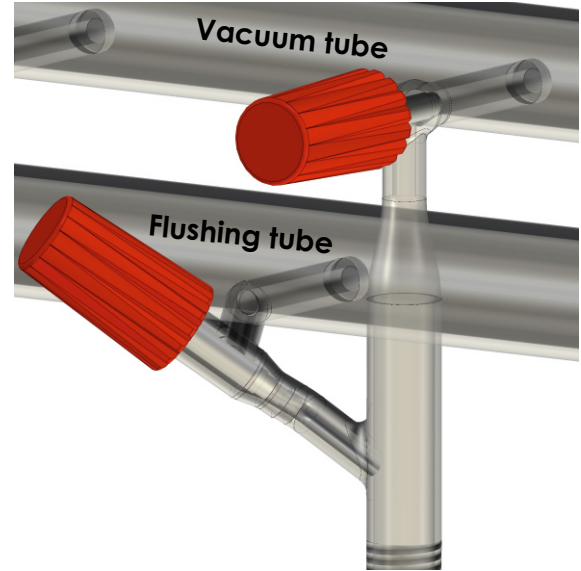
Valve design: HV

Technical data sheet pump forks / schlenklines

Valve designs

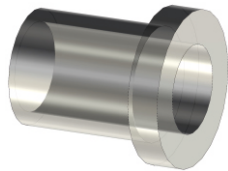


Variant: standard

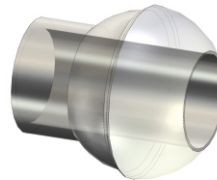


Variant: HV
(for higher vacuum)

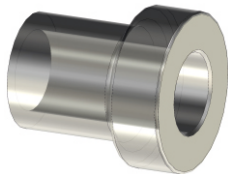
Connection variants at the pump fork outlet



Vacuum flange
KF NW16 - NW40
for external centering
ring with Viton O-ring



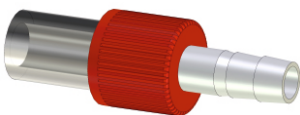
Spherical ground joint
S13-S40



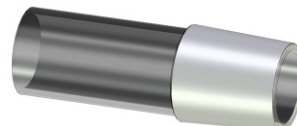
Plan flange
DN15-DN25



Spherical ground joint
S29-S35
with o-ring seal
Type Rotulex



Glass threads with olive
GL14-GL25



Conical ground joint
NS14/23-NS45/40